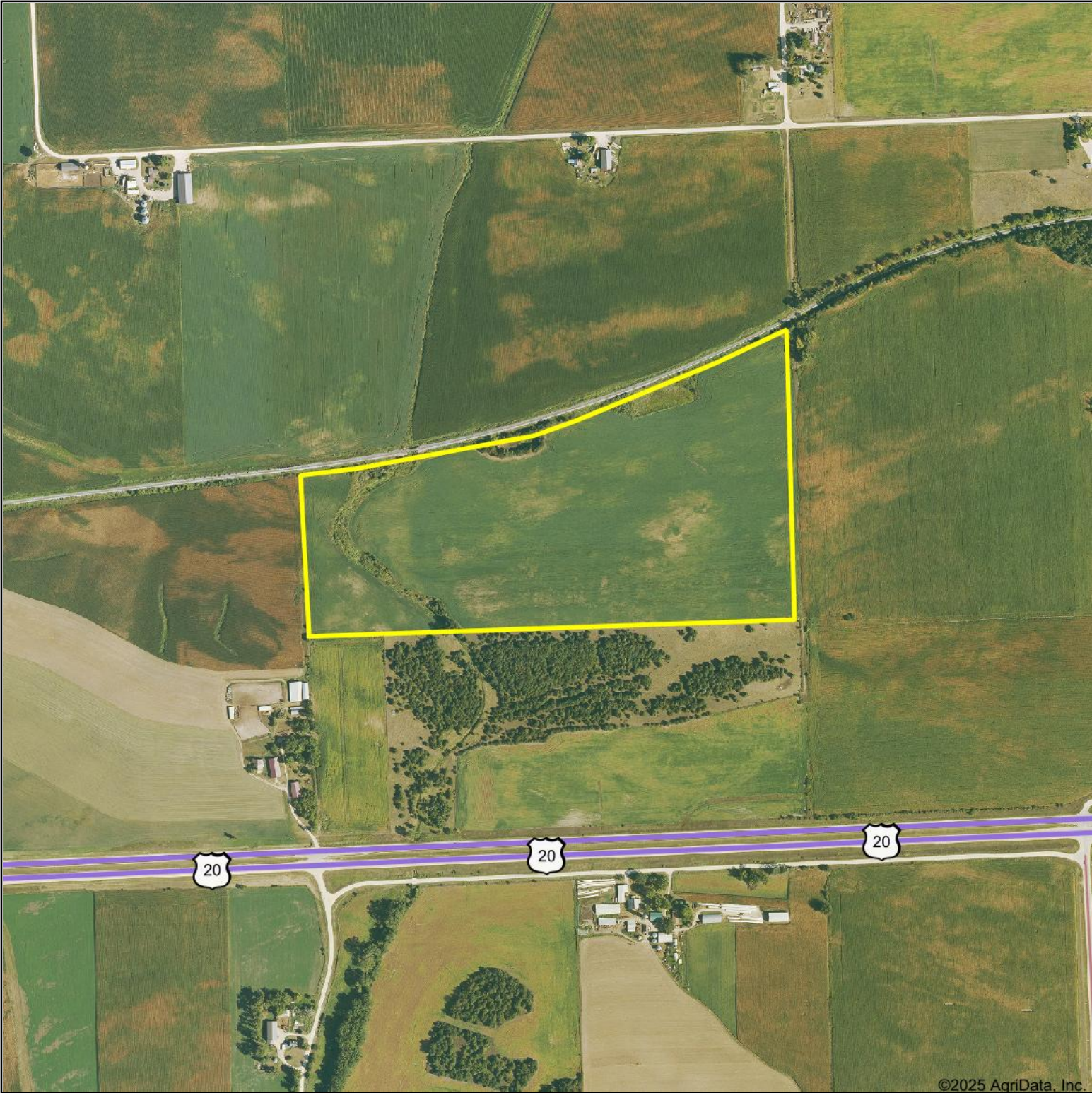


Aerial Map



Growthland

Boundary Center: 42.476451, -91.297115

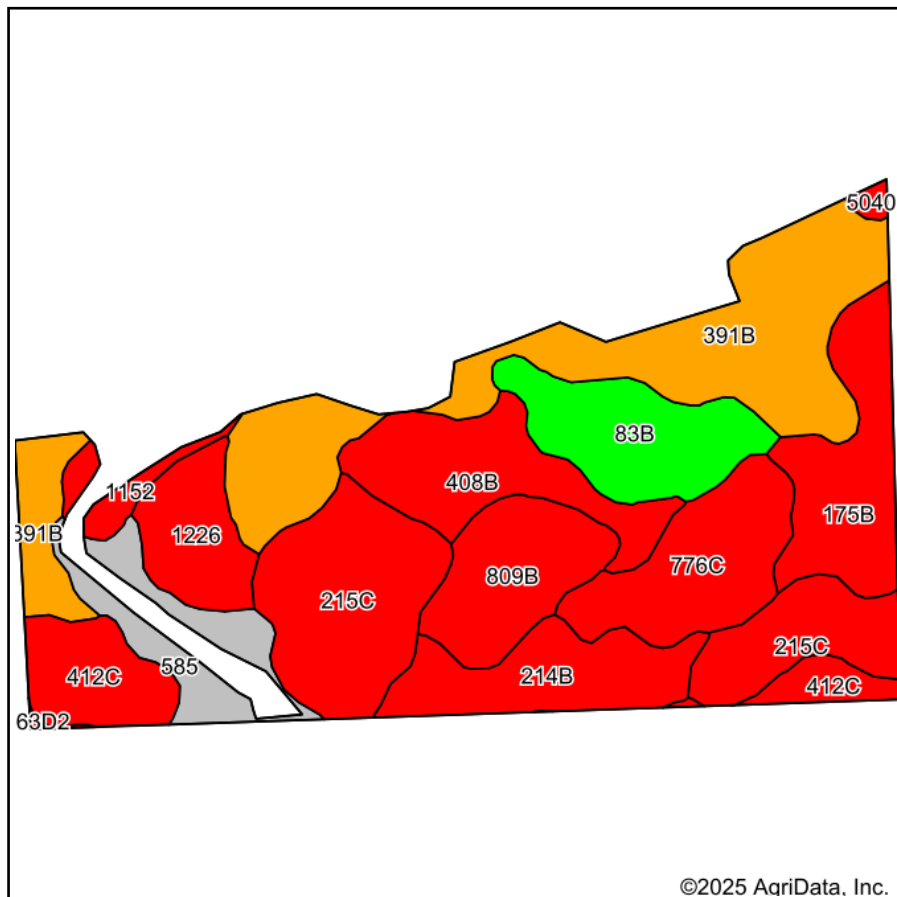


34-89N-4W
Delaware County
Iowa

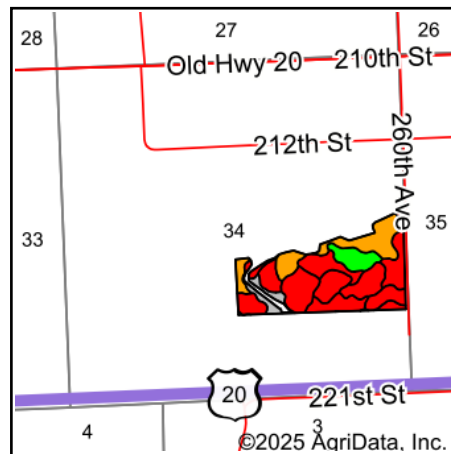


Maps Provided By:
 **surety**[®]
CUSTOMIZED ONLINE MAPPING
© AgriData, Inc. 2023 www.AgriDataInc.com

Soils Map



Soils data provided by USDA and NRCS.



State: **Iowa**
 County: **Delaware**
 Location: **34-89N-4W**
 Township: **Oneida**
 Acres: **62.47**

Growthland

Maps Provided By:

 CUSTOMIZED ONLINE MAPPING
 © AgriData, Inc. 2023 www.AgriDataInc.com



Area Symbol: IA055, Soil Area Version: 31

Code	Soil Description	Acres	Percent of field	CSR2 Legend	CSR2**
391B	Clyde-Floyd complex, 1 to 4 percent slopes	13.57	21.7%		87
215C	Goss loam, 2 to 9 percent slopes	9.78	15.7%		34
408B	Olin sandy loam, 2 to 5 percent slopes	5.00	8.0%		64
776C	Lilah sandy loam, 2 to 9 percent slopes	4.94	7.9%		5
175B	Dickinson fine sandy loam, 2 to 5 percent slopes	4.88	7.8%		50
83B	Kenyon loam, 2 to 5 percent slopes	4.78	7.7%		90
214B	Rockton loam, 20 to 30 inches to limestone, 2 to 5 percent	4.27	6.8%		49
809B	Bertram fine sandy loam, 2 to 5 percent slopes	4.24	6.8%		39
412C	Emeline loam, 2 to 9 percent slopes	3.84	6.1%		7
585	Coland-Spillville complex, 0 to 2 percent slopes, occasionally flooded	3.09	4.9%		70
1226	Lawler loam, 0 to 2 percent slopes, rarely flooded	2.89	4.6%		59
1152	Marshan clay loam, 0 to 2 percent slopes, rarely flooded	0.97	1.6%		54
5040	Anthroportic Udorthents, 2 to 9 percent slopes	0.22	0.4%		5
Weighted Average					54

**IA has updated the CSR values for each county to CSR2.

Soils data provided by USDA and NRCS.