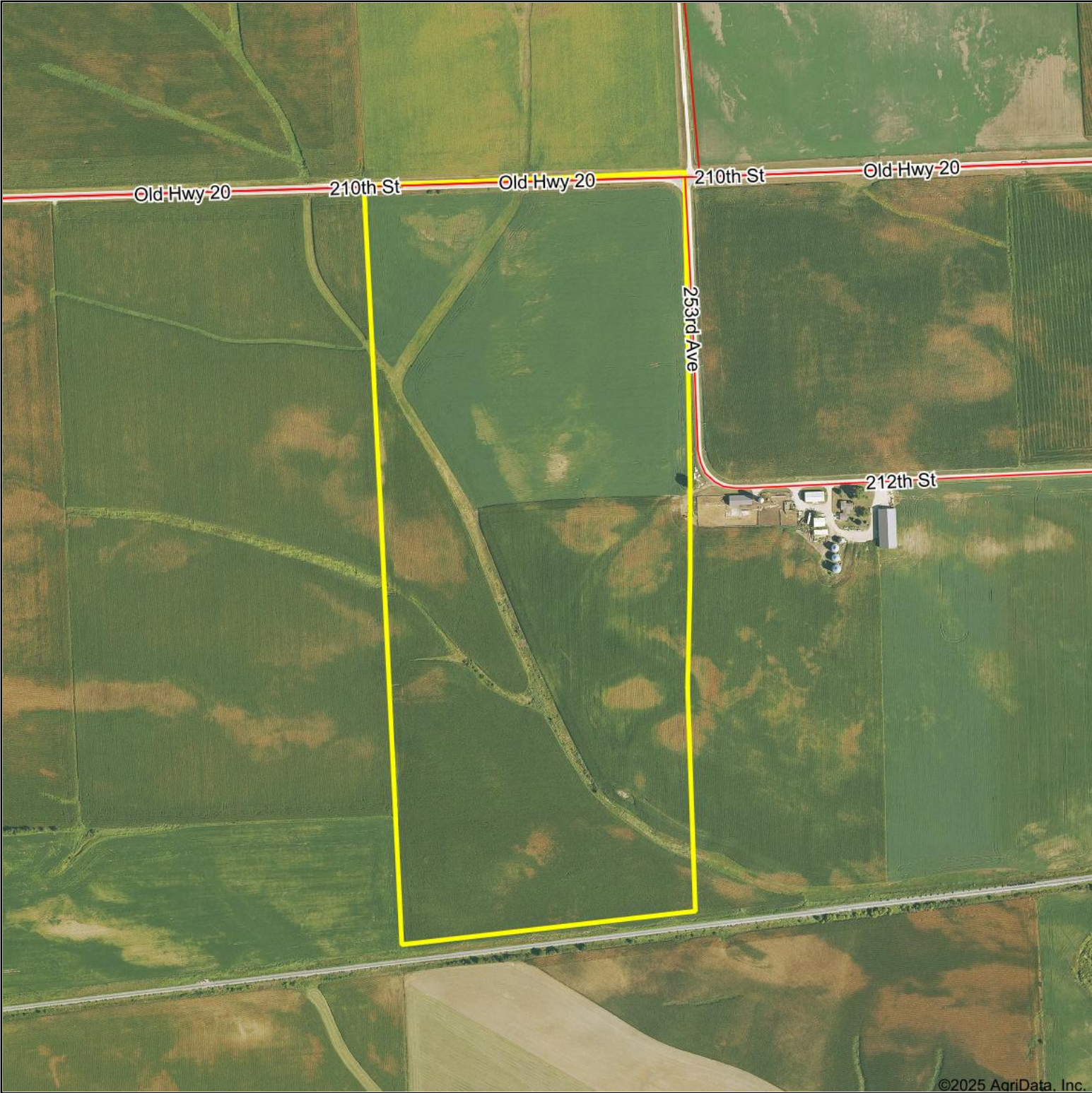


# Aerial Map



©2025 AgriData, Inc.

# Growthland

Boundary Center: 42.480643, -91.309728

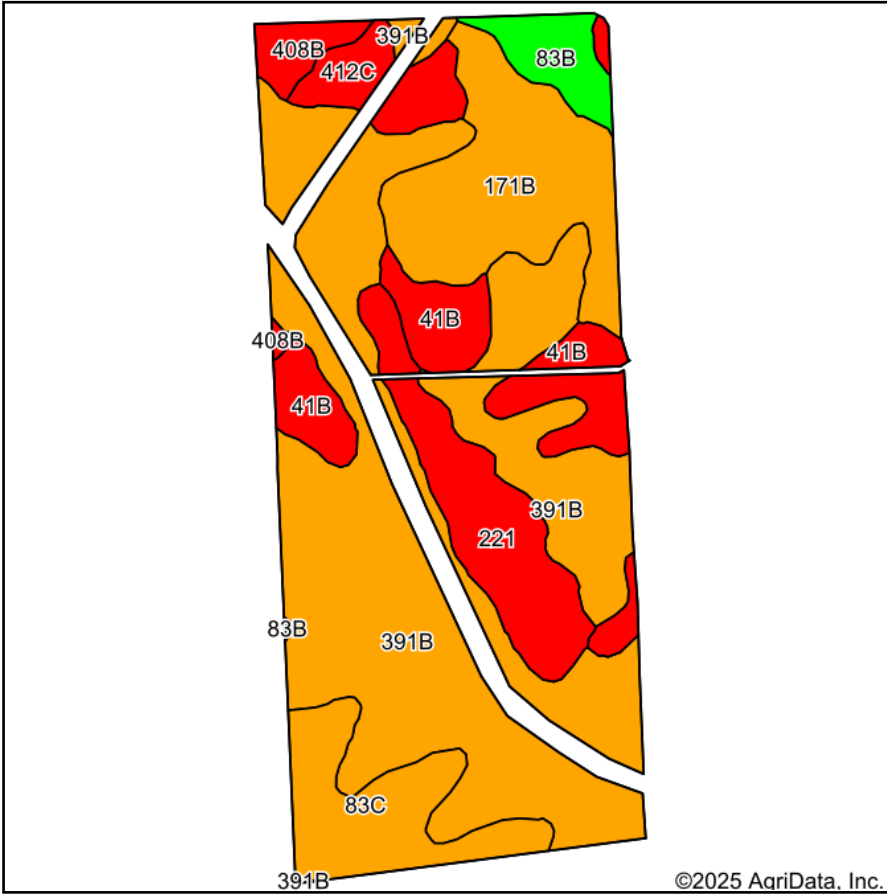


**34-89N-4W**  
**Delaware County**  
**Iowa**



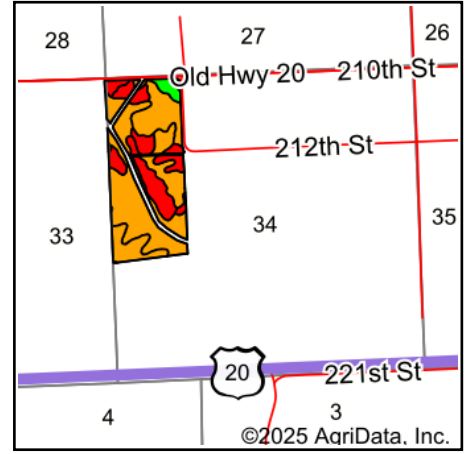
Maps Provided By:  
 **surety**<sup>®</sup>  
CUSTOMIZED ONLINE MAPPING  
© AgriData, Inc. 2023      www.AgriDataInc.com

# Soils Map



Soils data provided by USDA and NRCS.

©2025 AgriData, Inc.



State: **Iowa**  
 County: **Delaware**  
 Location: **34-89N-4W**  
 Township: **Oneida**  
 Acres: **86.21**

## Growthland

Maps Provided By:



© AgriData, Inc. 2023

www.AgriDataInc.com



Area Symbol: IA055, Soil Area Version: 31

| Code                    | Soil Description                           | Acres | Percent of field | CSR2 Legend | CSR2**    |
|-------------------------|--|-------|------------------|-------------|-----------|
| 391B                    | Clyde-Floyd complex, 1 to 4 percent slopes | 42.67 | 49.5%            |             | 87        |
| 171B                    | Bassett loam, 2 to 5 percent slopes        | 11.94 | 13.8%            |             | 85        |
| 41B                     | Sparta loamy sand, 2 to 5 percent slopes   | 8.56  | 9.9%             |             | 42        |
| 221                     | Klossner muck, 1 to 4 percent slopes       | 7.98  | 9.3%             |             | 48        |
| 83C                     | Kenyon loam, 5 to 9 percent slopes         | 7.15  | 8.3%             |             | 85        |
| 412C                    | Emeline loam, 2 to 9 percent slopes        | 3.32  | 3.9%             |             | 7         |
| 83B                     | Kenyon loam, 2 to 5 percent slopes         | 2.71  | 3.1%             |             | 90        |
| 408B                    | Olin sandy loam, 2 to 5 percent slopes     | 1.88  | 2.2%             |             | 64        |
| <b>Weighted Average</b> |  |       |                  |             | <b>75</b> |

\*\*IA has updated the CSR values for each county to CSR2.

Soils data provided by USDA and NRCS.